

How to add Class

The screenshot shows the Turnitin user interface. At the top, there is a navigation bar with the Turnitin logo and user information. Below this, there are tabs for 'Dashboard', 'All Classes', 'Join Account', and 'Join Account (TA)'. The main content area displays 'NOW VIEWING: HOME' and 'MSU Library & Resource Center'. A green '+ Add Class' button is circled in red, with a red arrow pointing to it. Below this, a 'Create a new class' form is shown. The form includes fields for 'Class type' (Standard), 'Class name' (3B), 'Enrollment password' (3B12345), 'Subject area(s)' (Engineering), 'Student level(s)' (Undergraduate), 'Class start date' (11-Apr-2014), and 'Class end date' (31-Mar-2015). A blue box with the text 'Fill in all Class details' is positioned over the form fields. At the bottom of the form, the 'Submit' button is circled in red, with a red arrow pointing to it.

The screenshot shows a 'Class created' confirmation dialog box. The dialog box contains the following text: 'Congratulations! You have just created the new class: 3B. If you would like students to enroll themselves in this class, they will need the enrollment password you have chosen and the unique class ID generated for this class. Class ID 7930117. Enrollment password 3B12345. Note: Should you ever forget the class ID, it is the number to the left of the class name on your class list. You can view or change your enrollment password by editing the class. Click the class name to enter the class and get started creating assignments.' A blue box with the text 'Keep your Class ID & Enrollment Password (every CLASS has different Class ID & Password)' is positioned over the Class ID and Enrollment password fields. At the bottom of the dialog box, the 'Continue' button is circled in red, with a red arrow pointing to it.

How to add Assignment

turnitin

Maizura Sahar | User Info | Messages | Instructor | English | Roadmap | Help | Logout

Dashboard All Classes Join Account Join Account (TA)

NOW VIEWING: HOME

✔ Congratulations! You have created the new class: 3B. Your class ID is 7930117 and your class name is MSU Library & Resource Center.

MSU Library & Resource Center [+ Add Class](#)

Class ID	Class name	Status	Statistics	Edit	Copy	Delete
7930117	3B	Active				

Click to Add Assignment

turnitin

Maizura Sahar | User Info | Messages | Change Language | Roadmap | Help | Logout

Dashboard Assignments Students Grade Book Libraries Calendar Discussion Preferences

NOW VIEWING: HOME > 3B

3B
CLASS HOMEPAGE

[+ Add Assignment](#)

START	DUE	POST	STATUS	ACTIONS
Before you or your students can submit a paper, you first need to create an assignment.				

Fill in all information

Create a title for the assignment

assignment title *

Set the assignment start and due dates and times using the date and time pull down menus

To view the advanced assignment options click [Optional Settings](#)

[+ Optional settings](#)

Click [Submit](#) to create the assignment

[submit](#)

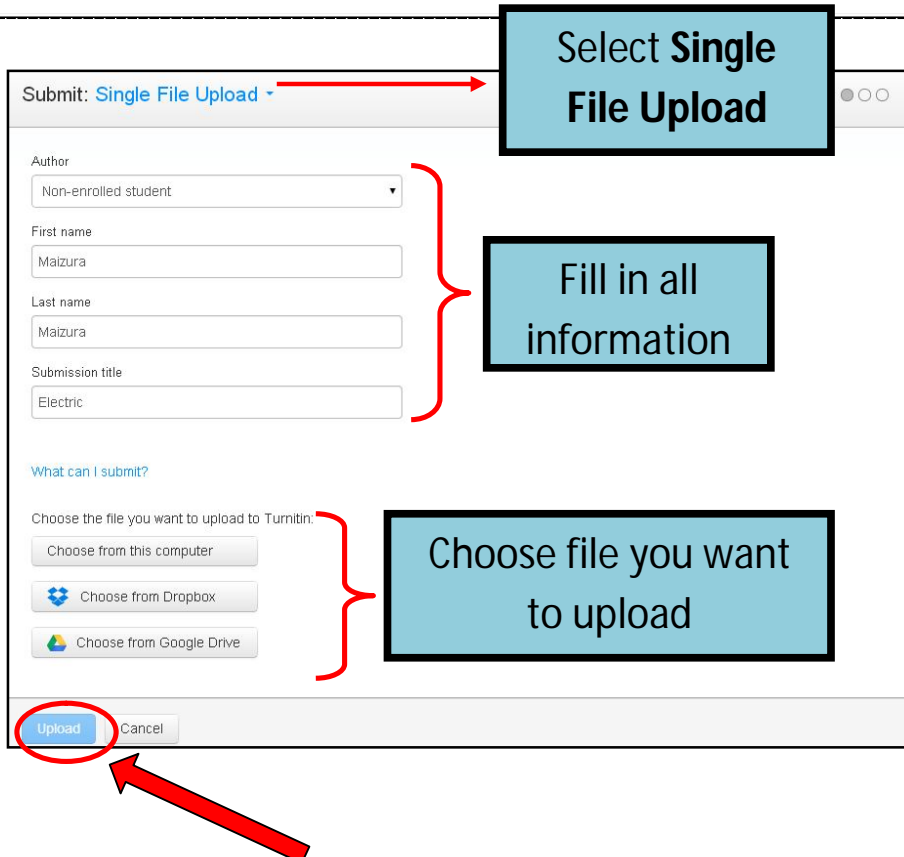
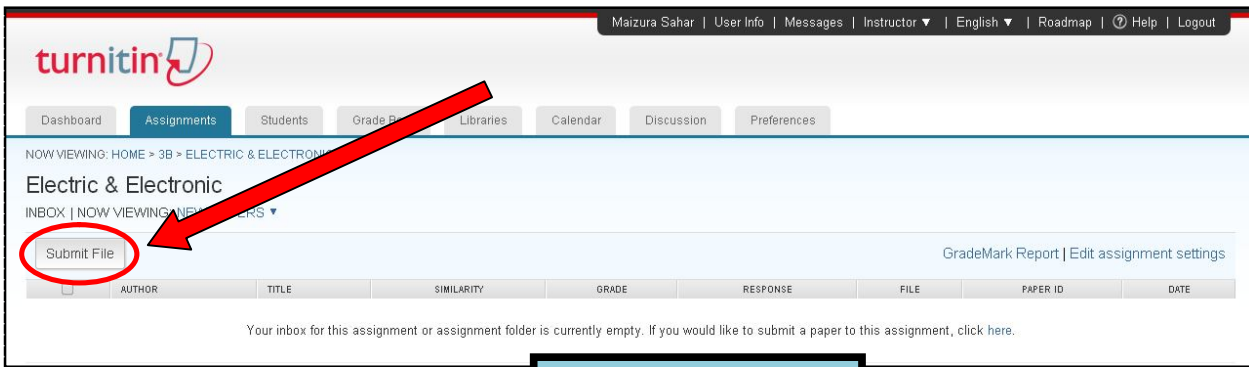
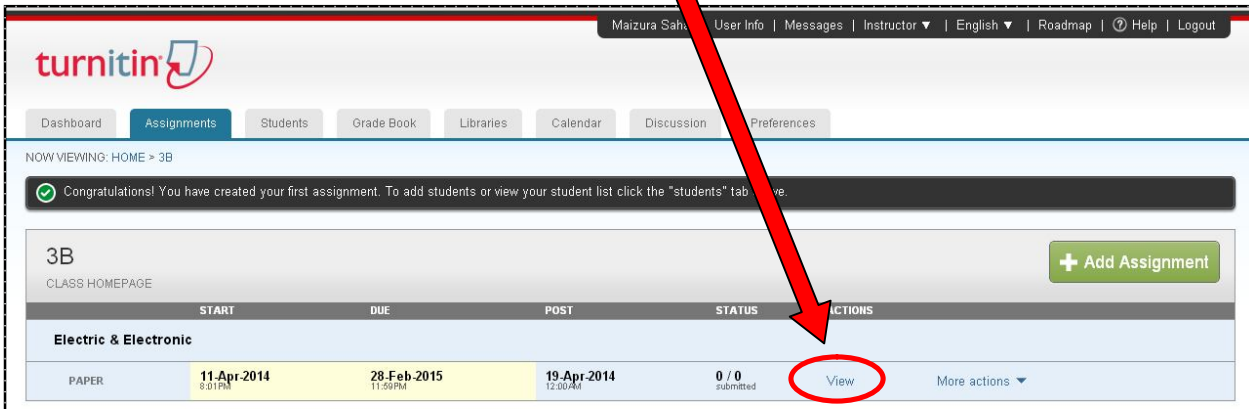
IMPORTANT!
Please click **"Optional Setting"** and select **submit papers to "no repository"**

Submit papers to: [?](#)
no repository

Search options: [?](#)

- Student paper repository
- Current and archived internet
- Periodicals, journals, & publications

How to Submit Paper



Please confirm that this is the file you would like to submit...

Author:
Maizura Maizura

Assignment title:
Electric & Electronic

Submission title:
Electric

File name:
details.docx

File size:
11.13K

Page count:
1

Word count:
40

Character count:
228



Congratulations - your submission is complete! This is your digital receipt. You can print a copy of this receipt from within the Document Viewer.

Author:
Maizura Maizura

Assignment title:
Electric & Electronic

Submission title:
Electric

File name:
details.docx

File size:
11.13K

Page count:
1

Word count:
40

Character count:
228

Submission date:
11-Apr-2014 20:08 MYT

Submission ID:
415655550



How to see the report

turnitin

Maizura Sahar | User Info | Messages | Instructor | English | Roadmap | Help | Logout

Dashboard Assignments Students Grade Book Libraries Calendar Discussion Preferences

NOW VIEWING: HOME > 3B > ELECTRIC & ELECTRONIC

Electric & Electronic

INBOX | NOW VIEWING: NEW PAPERS

Submit File

GradeMark Report | Edit assignment settings

	AUTHOR	TITLE	SIMILARITY	GRADE	RESPONSE	FILE	PAPER ID	DATE
<input type="checkbox"/>	Maizura Maizura	Electric	%		*		415655550	11-Apr-2014

feedback studio

Library Checking 2 - Generational Differences and Job Satisfaction among Employees in Sugar Manufacturing Company

118 of 225

GENERATIONAL DIFFERENCES AND JOB SATISFACTION AMONG EMPLOYEES IN SUGAR MANUFACTURING COMPANY

Tools

feedback studio

Library Checking 2 - Generational Differences and Job Satisfaction among

Similarity index percentage

Match Overview

16%

1	wiredspace.wits.ac.za	Internet Source	5%
2	maxwellsci.com	Internet Source	3%
3	Submitted to Institute ...	Student Paper	1%
4	research.ijcaonline.org	Internet Source	1%
5	shodhganga.inflibnet.a...	Internet Source	1%
6	Submitted to Internatio...	Student Paper	1%
7	www.tau.ac.il	Internet Source	1%
8	www.tjoss.com	Internet Source	1%

Similarity by sources - click URL

Choose to:

1. Include/exclude **quoted**
2. Include/exclude **bibliography**
3. Exclude **sources matches**