

NOVEMBER 2022



. RESEARCH

. SUSTAINABILITY

*. STELLAR STUDENTS /
QUALITY EDUCATION*

*. INDUSTRY
ECOSYSTEM*



8 MEDALS FROM PECIPTA '22

Blindness Prevention,
Applied Health Sciences
bag the gold

[click here
for more details](#)





2 MORE FROM SEOUL

A medal each to
MSU's iCARE and ITIC
at SIIF 2022

[click here
for more details](#)



2 GOLD MEDALS AT THE WORLD COOKS OLYMPICS

Malaysia emerges Overall Champion
with 4 awards to MSU

[click here
for more details](#)





PHARMACY GOLD STANDARD

Three-time Dean's List
Sandrika receives
MPS-Duopharma Biotech award

[click here
for more details](#) 





MOHE ENTREPRENEUR COMPETITION

Patchfinder's transdermal
treatment for diabetes bags
Best Innovation



PERTANDINGAN USAHAWAN INOVASI 2022
KEMENTERIAN PENGAJIAN TINGGI
30-11-2022

**Anugerah Khas
PRODUK INOVASI TERBAIK
RM 5,000.00**

AN KEUSAHAWANAN LIMA RIBU RINGGIT SAHAJA

PERTANDINGAN USAHAWAN INOVASI 2022
KEMENTERIAN PENGAJIAN TINGGI
30-11-2022

**TEMPAT KEDUA
RM 20,000.00**

GERAN KEUSAHAWANAN DUA PULUH RIBU RINGGIT SAHAJA



PAR EXCELLENT

Differently abled Haziq wins
gold and bronze at
Para SUKMA 2022

[click here
for more details](#)



MUHAMMAD BAZUJI ALIAS

MUHAMMAD HAZIQ CHEK MAT

PINGAT EMAS

Ping Pong Para
Lelaki - Kerusi Roda - Berpasukan Kelas 1-3



FIRE FOR THE OLYMPICS

With her SUKMA gold,
Shaveena takes the aim

[click here
for more details](#)





IRON MAN

Resilience, endurance,
in Edan Syah's Langkawi race
championship

[click here
for more details](#)





RUNNING, AND RISING

6 gold medals after,
Kotha is set to go far

[click here
for more details](#)

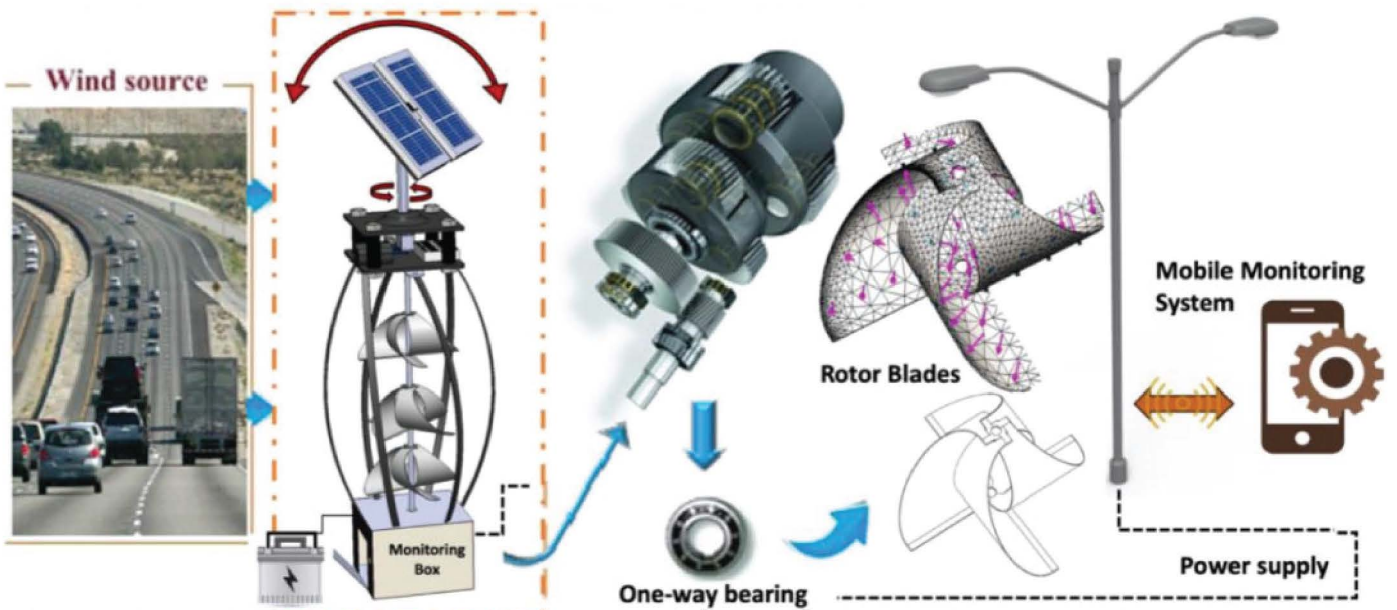




WORLD TOWN PLANNING DAY

Clean, affordable energy for the streetlights with MSU's award-winning research

[click here for more details](#)

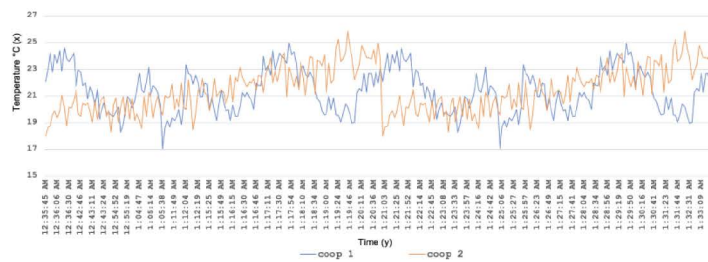


TO THE FUTURE OF FOOD

Another award-winning research brings agriculture up to speed with IR 4.0



Temperature





KARNIVAL KERJAYA JAMIN KERJA

3,662 tourism-related jobs
came to MSU

[click here
for more details](#) 



**KARNIVAL KERJAYA
JAMIN KERJA
INDUSTRI PELANCONGAN 2022**

14 - 15 NOVEMBER 2022
9.00 PAGI - 4.00 PETANG

Dewan Canselor Management
& Science University (MSU)

INFO JAWATAN KOSONG

