



msu
management &
science university



ANNUAL REPORT 2022 / 2023



**SUSTAINABLE
DEVELOPMENT
GOALS**



CONTENTS

OVERVIEW

University Profile	4
The President’s Message	12
Academic Management	14

ACADEMIC PERFORMANCE

Schools, Faculties, Colleges & Learning Centers	25
MSU Statistic on Graduates 2020, 2021, 2022	29
International Collaborations & Affiliations	32
Industry & Entrepreneurial Embedded University	36
Quality Assurance	39

STUDENT SUCCESS

Yayasan MSU	42
Human Resource	44
Adherence and Support to the United Nations	46
Sustainable Development Goals (SDG)	

UNIVERSITY PROFILE

Vision, Mission, Goals

History of MSU

The President

The Board of Directors

The Senate

University Management Committee

Organization Chart

University Logo

University Mace





msu
management
science university

msu CAMPUS

MSU aspires to be a leading transformative global university, engaging the society through entrepreneurship, research, innovation, industry embedment, and holistic education for a better future.

OUR VISION & MISSION

TRANSFORMATIVE

To provide compelling transformative learning experiences through educational opportunities and a collaborative learning environment centred on pioneering innovative delivery, ethical values, and economic as well as social transformation efforts.

GLOBAL

To be a leading globally connected university, diversely rich in culture and inclusiveness, and providing pathways for the exchange of knowledge and mobility programmes.

ENTREPRENEURIAL

To be the catalyst in a sustainable entrepreneurship ecosystem that promotes the development of an entrepreneurial culture as well as leaders with a global mindset.

RESEARCH & INNOVATION DRIVEN

To promote the culture of research and innovation in responding to national and global challenges; commercialising its interdisciplinary and translational research outcomes through entrepreneurship and incubators.

INDUSTRY EMBEDDED

To enhance a collaborative environment with industries, where applications of knowledge and research are incorporated into an industry-embedded curriculum that complements talent mobility activities, career pathways, and global community engagement efforts.

CARING INSTITUTION

To ensure the talented but disadvantaged are not impeded from achieving their dreams on account of unfavourable socio-economic station, and to accord appropriate opportunities for the gifted to actualise their true potential.

HOLISTIC EDUCATION

To mould holistic graduates through a balanced education that will enrich their personal, interpersonal and social skills through multi-disciplinary approaches, leadership, integrity, professionalism, and academic excellence, and nurture lifelong learning.

BETTER FUTURE

To generate excellent talents, lifelong learners, and responsible global citizens, and create diversified career pathways that help transform lives for a better future.

- #1 : 30,000 students
- #2 : Top 100 in Asia, QS Ranking & Rating
- #3 : 10 offshore campuses
- #4 : Top 50 World Employability Rate (QS)
and
Top 50 Employer in Malaysia
- #5 : Top Entrepreneurship University
- #6 : 300 partner universities
- #7 : > 90% rating in student satisfaction
- #8 : Fully technology embedded university
- #9 : Excellent facilities
- #10 : Fully Sustainable
- #11 : Talent Management and Succession

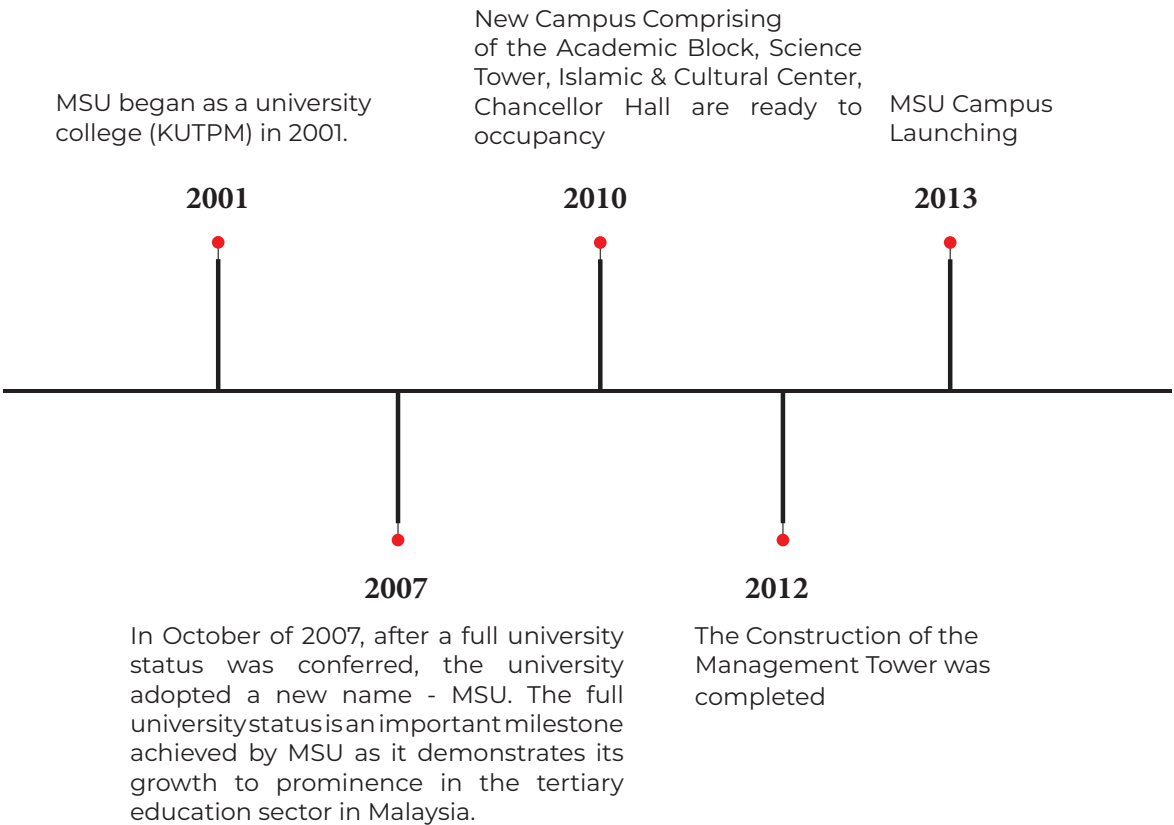
TE23 GOALS

CORE UNIVERSITY PRIORITIES

- CUP01 : Student Number
- CUP02 : Quality Education
- CUP03 : Industry Embedded Ecosystem
- CUP04 : Entrepreneurship Ecosystem
- CUP05 : Internationalization
- CUP06 : Research Embedded Ecosystem
- CUP07 : Student Learning Experience
- CUP08 : System and Technology
- CUP09 : Sustainability
- CUP10 : Reputation and Branding
- CUP11 : Talent Management

In theGlance

The Management & Science University (MSU) campus in Section 13, Shah Alam depicts growth and success. It is a modern structure that underscores MSU's achievements and its status as Malaysia's best teaching and learning university. Flanked by the Damansara River to the east and the Elite Highway to the west, the campus is strategically situated with ease of connectivity to downtown Kuala Lumpur and the rest of the world. The campus adopts elements of modern architectural concepts with generous spaces created within, for the promotion a positive culture and values essential in the development of its graduates.

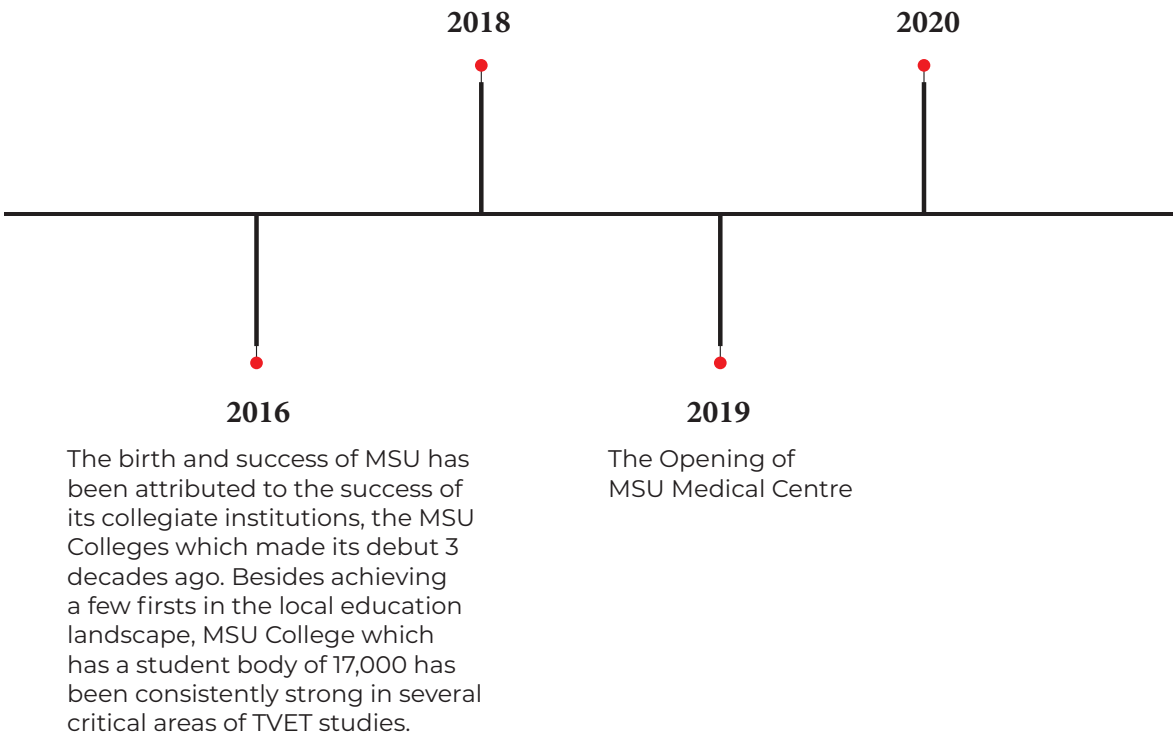


With a hype of activities centered at the U-Plaza and the U-Square areas, the campus never seem to cease buzzing with fun and human interaction. From open air social gatherings to formal ceremonies, from academic activities to colorful cultural and musical performances, the overall layout entices multiples activities to take place. Amidst the hustle and bustle of students life, there runs a buzon that circumnavigate the entire campus. The calming effect of the buzon creates a balanced ambience between the bustling students life and the tranquility of nature. Built at a cost of RM900 million, the three phase-campus complex ensure easy accessibility to all amenities by students and staff. The generous spaces provide that crucial sense of freedom for creative endeavors among its community.

The MSU campus is rich, vibrant and environmentally sustainable for knowledge and the pursuit of excellence. It is an embodiment of structures and the functional utilization of spaces. In all, as an applied, enterprise, holistic and international university, MSU offers foundation, undergraduate, postgraduate and flexible programs through an entry system that facilitates admission of students from all walks of life, where it aims to TRANSFORMING LIVES and ENRICHING FUTURE.

Our vision is to be a university of choice, providing quality education which is relevant to current needs and without compromising on moral and ethical standards. The success of our students is of paramount importance, as such, an intellectually stimulating learning environment is created within the university.

The establishment of MSU is also considered as timely as the nation progresses towards attaining a developed nation status by 2020. Our focus in the relevant and critical areas as well as research and development in these areas will help spur knowledge and ideas that will put Malaysia on course towards achieving the developed nation objective.



ACADEMIC STRENGTHS

97.5 %



- ✓ MSU is well-positioned to be one of the leading universities in the country providing industry relevant diploma, bachelor degree and postgraduate courses and research disciplines.
- ✓ MSU gives a major importance to quality teaching staff, equipping them with innovative and creative teaching methodologies. Besides incorporating international experience and exposure among students, extensive industrial training components are also blended into the programme of study to ensure graduates employability.
- ✓ Through a tracer study conducted, more than 97.5% of MSU graduates have begun their respective careers within 6 months after graduation. This has, to a large extent, demonstrated the versatility of the programmes offered at MSU.

ACADEMIC FACILITIES & RESOURCES



A large number of classrooms and lecture halls



Wireless Campus



An extensive collection of learning and reference materials are available



Health and Counselling Centre



A library that provides more than 67,000 titles of various disciplines and e-brary (electronic library)



Cafeterias



A large number of computers



The University and the city of Shah Alam offer a range of indoor and outdoor sporting facilities.

3 FACULTIES

6 SCHOOLS

1 CENTRE

7 CENTRES OF EXCELLENCE

MSU prioritizes quality education, incorporating 21st century learning and innovative techniques in the teaching delivery; focused on producing balanced and holistic graduates.

With the support and guidance of experienced academics, MSU students undergo a myriad of learning experiences which ranges from global mobility programmes, soft skills courses and extensive industrial training components. MSU programmes are focused on areas of specialisation which will enhance graduates' employability upon graduation.

MSU offers various level of studies from undergraduate to postgraduate :

- . Foundation**
- . Diploma**
- . Bachelor**
- . Master and PhD**

Competencies of skills are further enhanced through the offer of short courses and summer programmes across curriculum.

CENTRES OF EXCELLENCE

ICHLAS – International Centre for Halal Studies

MSU-DXL - MSU Diagnostics and Research Laboratory

SENDI – Software Engineering and Digital Innovation Centre

MYCELL - MSU Clinical Centre of Excellence

CCSBD – Centre Of Cyber Security And Big Data

MYCAM - MSU Centre for Complementary and Alternative Medicine

MSU-iCARE - MSU Centre of Excellence for Vision and Eyecare

FACULTIES, CENTRE AND SCHOOLS

Faculty of Health & Life Sciences

School of Hospitality and Creative Arts

Faculty of Business Management and Professional Studies

School of Graduate Studies

Faculty of Information Sciences and Engineering

Graduate School of Management

School of Pharmacy

International Medical School

School of Education and Social Sciences

Centre for Fundamental Studies

Making a Transformative Journey with a Difference and Impacting Lives of the Future

Over the past four decades, the passion of the university remains about bringing quality education and opportunities to the community that has driven the growth of Management and Science University (MSU) as a renowned global university. The interest in nurturing the environment where students can flourish academically and professionally, has seen numerous outstanding successes of our students who have now become successful professionals. This year, we have included our focus on employability and entrepreneurship that have led MSU to greater heights. From recognition as the best entrepreneurial university in the Asia Pacific region and earning the title of the best green university of the year at the ACEEU, the success stories of MSU graduates and the universities' high rankings on QS and Times Higher Education (THE) impact rankings are a testament to the commitment from everyone.

A key aspect of their strategy involves talent development and nurturing human capital within the university community. By fostering a culture of research and collaboration, faculties can enhance the expertise as both educators and researchers, thereby elevating the overall quality of education. Through collaborations with local authorities, governments, and over 300 partner universities worldwide, the aim to contribute significantly to advanced research and innovative practices will be evident.

Another significant feature is forming strong partnerships with industries to create an Industry-Embedded University. This approach ensures that education is not limited to the confines of the classroom but extends to real-world experiences and community engagement. By collaborating with industries and working with the community, aspiring educators and entrepreneurs can develop well-rounded graduates equipped with both academic knowledge and practical skills.

This year, we have included our focus on employability and entrepreneurship that have led MSU to greater heights. From recognition as the best entrepreneurial university in the Asia Pacific region and earning the title of the best green university of the year at the ACEEU, the success stories of MSU graduates and the universities' high rankings on QS and Times Higher Education (THE) impact rankings are a testament to the commitment from everyone. We will continue our commitment to maintain these institutions' reputation for academic excellence and innovation. To stay at the forefront of unconventional education and research in their respective fields, we shall continue to put great emphasis on developing a foundation of talented and skilled faculty members who shall deliver progressive innovation and impactful research.

It has been a wonderful year and we have seen moments which solidifies the university's commitment to fostering various partnerships with industries and partners for the holistic development of our students. Let us move forward with this transformative journey in mind, as we devote on community impacts, as we drive a positive difference in the world of education for better future.



PROFESSOR TAN SRI DATO' WIRA DR.
MOHD SHUKRI AB YAJID
President and Founder
Management & Science University (MSU)

BOARD OF GOVERNORS

Management & Science University (MSU)



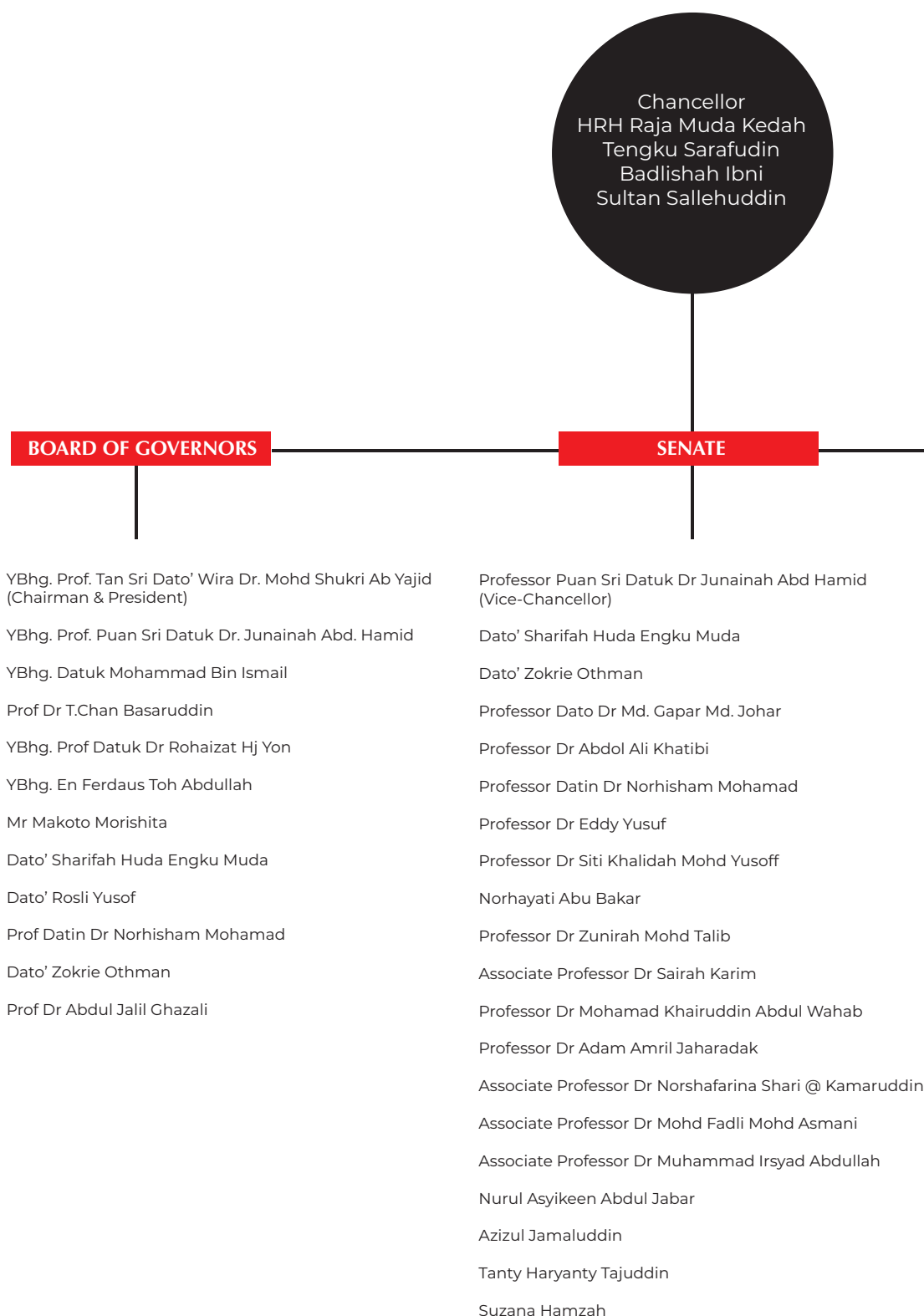
Sitting from left :

PROF. DRS. T. BASARUDDIN, PROF. PUAN SRI DATUK DR. JUNAINAH ABD. HAMID, PROF. TAN SRI DATO' WIRA DR. MOHD SHUKRI AB YAJID, DATUK MOHAMMAD ISMAIL, FERDAUS TOH ABDULLAH,



Standing from left :

PROF. DATUK DR. ROHAIZAT HJ. YON, PROF. DR. ABDUL JALIL GHAZALI,
DATO' ROSLI YUSOF, DATO' ZOKRIE OTHMAN, DATO' SHARIFAH HUDA
ENGKU MUDA, PROF. DATIN DR. NORHISHAM MOHAMAD



UNIVERSITY MANAGEMENT STRUCTURE

DEANS

(GSM) Graduate School of Management:
Professor Dr. Zunirah Mohd Talib

(SGS) School of Graduate Studies:
Associate Professor Dr. Norshafarina Shari @ Kamaruddin

(FBMP) Faculty of Business Management & Professional:
Associate Professor Nurul Asyikeen Binti Abdul Jabar

(SESS) School of Education and Social Sciences: Professor
Datin Dr. Norhisham Mohamad

(SHCA) School of Hospitality & Creative Arts:
En. Azizul Jamaludin

(IMS) International Medical School:
Professor Dr. Mohamad Khairuddin Abdul Wahab

(SPH) School of Pharmacy:
Associate Professor Dr. Mohd Fadli Mohd Asmani

(FHLS) Faculty of Health & Life Sciences:
Associate Professor Dr. Sairah Abd Karim

(FISE) Faculty of Information Sciences & Engineering:
Professor Dr. Adam Amril Jaharadak

DIRECTORS

Quality Assurance & Audit
(Business Management & Social Sciences):
Associate Professor Asmahani Aswaddalai

Quality Assurance & Audit (Science & Technology):
Dr Lily Suriazna Raya

Academic & Students Development:
Pn. Halijah Hassan

Research Management Centre:
Professor Dr. Indang Ariati Ariffin

CEdEC:
Pn. Siti Amzidalina Ghazali

Chief Librarian:
Pn. Suzana Hamzah

Registrar Office:
Associate Professor Dr. Halinah Atan

Events & Production:
En. Azuan Afandi Ahmad

Centre for Fundamental Studies:
Pn. Tanty Haryanti Tajudin

Campus Maintenance & Security:
En. Nazli Mohd Ngadian

Human Resource:
Pn. Masjuita Mustaffa

Examination & Awards:
Pn. Marzuwati Ibrahim

Information Technology :
En. Mohd Zamri Ibrahim

THE MSU LOGO



THE HIBISCUS



The national flower, the hibiscus, symbolically represents MSU as a university deeply rooted within rich Malaysia values.

MSU's steadfastness is depicted through the generous red and white petals whereas the largest white dot, the stigma, at the end of the upward-surge of the style depict a globe, signifying the university's readiness to be regional and globe institution of choice.

MSU's focus areas of Medicine, Health Sciences, Business Management and Professional Studies, and Information Sciences & Engineering are metaphorically linked with the hibiscus.



The complete flower is seen as symbolizing life vis-a-vis the focus on Medicine and Health Sciences related disciplines.



The five petals MSU's five mission statements in its quest at nurturing leaders of tomorrow through quality education professed by means of innovative teaching and learning methodologies that ensure students' success.

msu

management & science university



The red and black colors are specifically chosen to depict a bold and balanced growth of MSU.



Black color denotes change and the challenges confronting it



Red connotes radiance and the vibrancy of MSU's role in education against



The colour white, on the other hand, implies the purity and infinity of knowledge for all to discover at MSU.



The 'M' shaped petals represent the management whereas the style related to the information sciences and engineering disciplines offered through MSU.



The 'M' shaped petals are also closely associated with the elements of love and care embedded within MSU and its community.

THE MACE





THE HEAD AND THE DOME

The world map and the Malaysian crest on it portray the nation's role in particular MSU, in making Malaysia as a Regional Centre of Academic Excellence. The crests of all 13 states are represented at the top section of the neck symbolize parliamentary democracy, the system of government that has delivered to the people peace, racial harmony and an outstanding economic growth. The symbols of MSU's specialization areas which are Business Management and Professional Studies, Health and Life Sciences, Medicine, Information Technology and Engineering.

The dome that rest on the top denotes Islam which is the official religion of Malaysia.

ACADEMIC MANAGEMENT

Schools, Faculties, Colleges & Learning Centers

Programmes

Academic Initiatives

Student Intake, Enrolment & Graduation

Convocation



**SCHOOLS, FACULTIES,
COLLEGES & LEARNING
CENTERS**

INTERNATIONAL MEDICAL SCHOOL

As a top international university in Malaysia and the country's best teaching and learning university, MSU provides areas of studies focused towards medicine, health sciences, nursing, pharmacy, information sciences, engineering, business, management, hospitality and law. The medical programme offered at MSU is in response to the fulfillment of quality human capital needs of the nation. The MBBS programmes is an MSU initiative towards complementing the government's effort at achieving 1 : 600 doctor patient ratio by 2020.

The Bachelor of Medicine and Bachelor of Surgery (MBBS) at MSU is a 5 year programme. The duration is divided into three phases with each phase varying in terms of length, subjects and activities involved. Among the subject areas that students will be exposed to throughout the 3 phases are human anatomy, human physiology, biochemistry, pathology, pharmacology, forensic, microbiology, ophthalmology and ENT. The clinical session begins in phase 2 along with the para-clinical subjects and housemanship session commences in phase 3. During this session students are required to perform a rotational training of three months each at all the relevant medical departments.

Upon completion students are required to register with the Public Service Department and the Malaysian Medical Council (MMC) before undergoing a two year housemanship programmes and a three year compulsory service locally (Malaysian students only).

International Students are encouraged to seek advice of the respective country's medical council on housemanship and service requirement.

FACULTY OF HEALTH & LIFE SCIENCES

It is part and parcel of MSU's mission to provide special attention to the teaching methodology towards the attainment of specialised knowledge by all students. Hence the degree and diploma programmes offered through the Faculty of Health & Life Sciences are innovatively designed to give you the extra edge.

The programmes are focused on unique areas of specialisation that will enhance graduates employability after graduation. It is indeed advantageous to have a specialised knowledge and a degree or diploma from the global university of choice.

Health Science encompass a multitude of preclinical courses which progress dynamically towards solving health, societal & environmental issues - locally and internationally. Practitioners of this discipline are highly sought after by many clinical agencies - public or privately owned. Upon the successful completion of any of the MSU's diploma programmes, students may choose to continue study at the degree level in MSU or any of the foreign institutions listed under the Global Mobility Programmes (GMP) arrangement.

The programmes under the Faculty of Health and Life Sciences are specifically for students who wish to gain a recognized qualification and excel in a professional career where the principles of inter-disciplinary science is adopted as part and parcel of the operation of an organisation or corporation.





FACULTY OF BUSINESS MANAGEMENT AND PROFESSIONAL STUDIES

It is part and parcel of MSU's mission to provide special attention to the teaching methodology towards the attainment of specialised knowledge by all students. Hence the degree and diploma programmes offered through the Faculty of Business Management & Professional Studies are innovatively designed to give you the extra edge.

The programmes are focused on unique areas of specialisation that will enhance graduates employability after graduation.

FACULTY OF INFORMATION SCIENCES AND ENGINEERING

The Faculty of Information Sciences & Engineering (FISE) at Management & Science University (MSU) comprises the three departments of Media Science & Graphic, Engineering & Technology, and Information Sciences & Computing. Specialization is early and plenty, with close to 40 programmes offered. FISE aims to produce technically competent and well-rounded professionals. Its curricula integrate knowledge of new technological marvels with diverse human values and global perspectives. Soft skills supplement core knowledge and technical skills, resulting in capable graduates enriched by their holistic learning experience.

SCHOOL OF HOSPITALITY AND CREATIVE ARTS

The School of Hospitality and Creative Arts (SHCA) programmes in hospitality and creative arts are offered with a strong practical and industry focus. SHCA boasts excellent training facilities such as an on-campus professional kitchen, a fashion hallway, a travel agency, a spa, and a beauty outlet. SHCA programmes prepare their graduates for management careers within the dynamic fields of hospitality and the creative arts. SHCA students are given solid grounding in the business operation side of the hospitality and creative arts industries, alongside effective leadership and management skills. A strong experiential component of SHCA programmes is the period of industrial internship, which allows SHCA students to put theory into practice and apply their learning to a variety of business situations. SHCA graduates are thus equipped with the skills, knowledge, and experience necessary for careers in hospitality and the creative arts. SHCA programmes comprise diploma and bachelor's degree studies.

SCHOOL OF EDUCATION AND SOCIAL SCIENCES

The School of Education & Social Sciences (SESS) at Management & Science University (MSU) sets you on your pathway to shaping the future of your community. Its broad-based curricula blends knowledge with practical experience and relevance, equipping you with the confidence and skills required of careers in education and the social sciences. With the competency and professional skills instilled, you may teach either a public school or a private one. You may also choose to start working upon obtaining your SESS diploma or go on to degree studies in related areas.

SCHOOL OF PHARMACY

Contrary to popular belief, the job of a pharmacist is not just dispensing medicine – they can in fact go into a variety of job roles. As part of the healthcare team, pharmacists provide care for patients. This care focuses on the patients from the perspective of drug therapy. The pharmacist is responsible to identify, prevent and resolve patients' drug therapy problems. Pharmacists are 'experts on medicines' and play an active role in the quality of medicine used in our society. Pharmacists have skills in the chemistry of the drugs, formulating medicines and the therapeutic use of drugs to treat diseases.

GRADUATE SCHOOL OF MANAGEMENT

MSU MBA Program at GSM offers students an experiential learning in cross-cultural communications, the opportunity to build a global network and the possibility to create future international career opportunities. In addition, students will have the opportunities to develop management skills and techniques, obtain strategic orientation and implement the strategies formulated. These include networking events with industrial leaders, talks by CEOs, industrial visits, management games, case study approaches, video presentations, on-line interaction and many other approaches. Our programme helps students to develop the skills in leadership, entrepreneurship, strategic management and decision-making and trains them to become successful corporate leaders and entrepreneurs in the most competitive markets. Upon completion of the programme, students will have a broad understanding of their specialised areas.

SCHOOL OF GRADUATE STUDIES

The School of Graduate Studies (SGS) at Management & Science University (MSU) provides a research education tailor-made for the global market. Its globally competitive programmes and highly selective recruitment distinguish MSU's SGS for first pick amongst students choosing a graduate school. SGS programmes are guided by MSU's own vision for a global competitiveness that advances its students onto the world stage. They also incorporate MSU's ideals of holistic learning that characterize the University's teaching, distinguish its students' learning, and define its graduates. Programmes at MSU's SGS comprise biomedical sciences, food service technology, information technology, information and communication technology, computer science, engineering, pharmacy, clinical pharmacy, and health administration. As co-ordinator of MSU's graduate studies, SGS strives to make your transition from graduate into researcher and scholar a smooth one. SGS encourages interdisciplinary research thus maintains strong inter-faculty links that enhance its knowledge-based human capital. It also constantly forms new alliances across industries and with institutions of higher learning worldwide. Your choice of SGS mirrors that of industries, who significantly feature in and sponsor the SGS alumni network.

MSU COLLEGE SHAH ALAM

MSU College's commitment in offering critical and industry relevant courses is crucial towards the creation of future quality graduates. Through its ten branches all over the country, MSU College emphasis in the areas of Health Sciences, Information Sciences, Engineering, Hospitality, Culinary Arts, Business Management and Professional Studies has been exemplary. The programme offered by MSU College is based on the nation's current demand on human capital needs.

The programme that the College offers meets the stringent standards set by the local and international bodies. These programmes are meticulously crafted to enhance the graduates' potential.

MSU College Shah Alam is among the 15 private institutions of study awarded the six-star rating through the MyQUEST 2016/2017 for the college-based category.

MSU College offers certificate, diploma, and degree programmes through 10 branches nationwide; Shah Alam, Kota Bharu, Penang, Sabah, Sarawak, Seremban, Sungai Petani, Terengganu, Ipoh and Johor Bharu.

MSU College through its School of Science and Technology (SST) offers programme such as Pharmacy, Health Science, Medical Laboratory Technology, Graphic Design, Electric and Electronic Engineering, Information Technology and Multimedia Technology.

The School of Hospitality, Education and Business Studies (SHB) is focused on programmes such as Management, Accountancy, Early Childhood Education, English Language Teaching (ELT), Tourism Management, Food Services and Restaurant Management, Hotel Management and Culinary Arts.

MSU College gives priority to quality education and the importance learning experiences towards producing quality and holistic graduates. Besides incorporating international exposure in the students learning experience, extensive industrial training components and personal enrichment competency elements are also blended into the programme of study to ensure the graduates employability.

MSU Statistic on Graduates (2020, 2021, 2022)



STUDENT INTAKE EVERY YEAR

FEBRUARY

APRIL

JULY

SEPTEMBER

NOVEMBER

EQUIVALENT FULL-TIME STUDENTS



20, 584

ENROLMENT

PhD

7%

Masters

10%

Bachelor

50%

Diploma

23%

Foundation

10%

MSU STATISTIC ON GRADUATES (2020 - 2022)

FACULTY / SCHOOL	YEAR 2020		YEAR 2021		YEAR 2022		TOTAL
POSTGRADUATE	82	90	90	59	54	375	375
FACULTY OF BUSINESS MANAGEMENT AND PROFESSIONAL STUDIES	467	696	1238	791	664	3856	3856
FACULTY OF HEALTH AND LIFE SCIENCES	204	147	320	125	145	941	941
FACULTY OF INFORMATION SCIENCES AND ENGINEERING	125	324	655	384	364	1852	1852
INTERNATIONAL MEDICAL SCHOOL	172	41	227	0	158	598	598
SCHOOL OF EDUCATION & SOCIAL SCIENCES	438	150	552	423	397	1960	1960
SCHOOL OF HOSPITALITY & CREATIVE ART	166	500	747	558	241	2212	2212
SCHOOL OF PHARMACY	115	17	189	44	143	508	508
UNDERGRADUATE	1687	1875	3928	2325	2112	11927	11927
OVERALL GRADUATES	1769	1965	4018	2384	2166	12302	12302

International Collaborations & Affiliations

Partner Universities

Recognition & Membership





GLOBAL NETWORKING WORLDWIDE

TOP REGIONS

Eastern Asia
Southeast Asia
Middle East
North Africa
Central Asia
Southern Asia

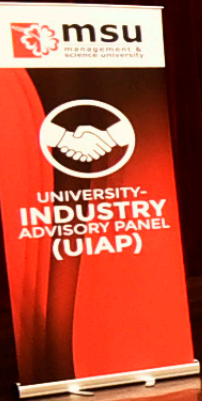


Industry & Entrepreneurial Embedded University

Industry

Entrepreneurship

University Industry Advisory Panel (UIAP)





Industry

Industry-embedded programmes have always been the MSU's DNA in building work-ready and well-rounded graduates

With strong support received from MSU's industry partners worldwide, the learning experiences provided are to ensure the students equipped with the latest input and relevant skills as required by the job market.

At MSU, we believe that feedback from the industries can further enrich the quality of graduates.

Industries want graduates who come with complete package - professional knowledge, collaborative skills, competitive skills, and balanced, well-rounded attributes.

MSU empowers the students to develop these within its framework of experiential learning and real work experience

Not only emphasising on academic components, students also required to go through the Personal Enrichment Competency (PEC) and Graduate Employability Skills (GEmS) programme to develop their good attributes and sharpen the soft skills

Feedback from more than 2,000+ industry partners, that the students are independent, innovative, good communicators and collaborators are clear evidence that MSU is on the right track in ensuring the employability of its future graduates.

Entrepreneurship

As the university continues to maintain its relevance, focus on entrepreneurship and employability is given a top priority

MSU has built a comprehensive entrepreneurial ecosystem encompassing students, lecturers and community engagement across all programmes of study.

Through various platforms, it is widely promoted and established to make sure everyone understands the importance of being entrepreneurial and have the right skills and mindset in them.

The Jumpstart programme has been developed through the Leadership and Entrepreneurship Advancement Institute (LEAD).

It is an applied entrepreneurship programme which is created to assist and coach entrepreneurs among MSU students and graduates in setting up and running a business under the MSU entrepreneurship ecosystem.

With RM5 million in revolving seed funds, it is aimed to transform entrepreneurial aspirations into concrete plans for eligible aspiring entrepreneurs.

MSU is preparing and building the students and graduates to become job creators and not just a job seeker.



University Industry Advisory Panel (UIAP)

As a result, MSU is at the highest ranking among all other higher learning institutions in the country in relation to the employability of its graduates. According to the tracer study by the Ministry of Education, 98.6% of MSU's graduates are employed within six months of graduations.

Through the Accreditation Council for Entrepreneurial and Engaged Universities (ACEEU), Netherlands, MSU is the first university in Asia to get accredited as a recognition towards its strong effort and continuous commitment in creating significant impacts on social, cultural and economic through the promotion of entrepreneurship and engagement across the university.

Through the University Industry Advisory Panel (UIAP), MSU has engaged and collaborated with more than 250 industries players locally and globally in shaping and improving the University's curriculum to ensure it is up-to-date and on track with market needs.

Whilst bridging knowledge and skills gaps to the benefit of future graduates, the partnership also maintains industry's access to a talent source that will ensure their own future competitiveness.

To ensure the university-industry linkages meets the objective, continuous effort and engagements have been done - MOUs, visits, job matching programmes, industrial internship programmes, seminars, sponsorships, community engagement and joint venture programmes.

These also include CEOs and top-level managements coming over to get up-close and personal with the students about their professional experiences and to share the latest trend in industry.

In overall, the UIAP keeping teaching and learning relevant and contemporary that mirrors industry's latest developments and best practices, as well as strengthening the university-industry ecosystem with comprehensive collaborations and engagements.

Quality Assurance

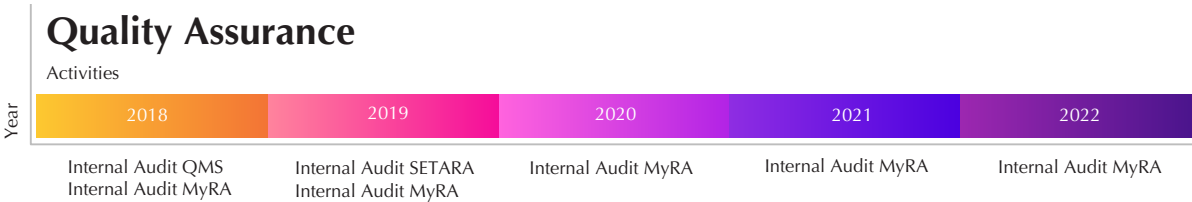
Awards
Recognitions



QAAC

The Quality Assurance and Audit Committee (QAAC) oversees to ensure the quality and standards are observed at the university. The process that consists of establishing standards, designing guidelines and procedures, are essential to the success and development of the university.
QMS audits are conducted on annual basis.

- Method of audit
- Cross-department audit
- Self-review audit
- Other audits are conducted based on external benchmarking requirements.



AWARDS &



Top 200
(QS ASIA Rankings 2023)



Top 30
University in Southeast Asia on the
QS World University Rankings (WUR) 2022
Regional Edition.



Top 100
University in the World for
Young University Ranked Under
QS Top 50 Under 50

Top #46 WORLD
Hospitality &
Leisure Management



Top 101+ WORLD
Art &
Humanities



Top 301+ WORLD
Business &
Management Studies



Indian
Medical Council

General
Medical
Council

General Medical Council
(GMC), UK



Maldives Medical and
Dental Council



A Tier 5 Excellent Status University
(Rating System for Malaysian Higher
Education Institutions -
Ministry of Higher Education)



ASIA'S 1st University Accredited by
Accreditation Council for
Entrepreneurial & Engaged
Universities. (ACEEU), Netherland



Platinum Standard Award
of 5 Crowns by ASIC, UK



Global TVET
Model University
by ASIC, UK



ASIC's Inclusivity Awards
for Equality in Education



Excellence in
Education Digitization



Gold Awards School of
Tourism and Hospitality



International Centre
of Excellence for
Events Management



RECOGNITIONS



Top 301
University in the World for
2022 Graduate Employability
Rankings



Overall
. Teaching . Employability . Inclusiveness .
. Online Learning . Internationalization .
. Social Responsibility . Academic Development .
. Hospitality and Leisure Management .

Top #15
Malaysian universities in
the QS World University
Rankings 2024





Global Rankings



ABEST-21, JAPAN



Sri Lanka Medical Council



**Malaysian
Medical Council**



**Education Commission for
Foreign Medical Graduates**



විශ්ව විද්‍යාල පුරිතාදන කොමිෂන් සභාව
University Grants Commission (UGC)



**The First Higher Education
Institution to Achieve an
EMNA E-Star**



**Innovation and Excellence
in Higher Education &
Outstanding Student Support
by ASIC, UK**



**Premier University Status by
Accreditation Service for
International Schools, Collages
& Universities (ASIC), UK**



**Outstanding Leadership
in International TVET Education
by ASIC, UK**



**Lifetime Achievement in
Entrepreneurship Award**



**Bronze Winner
in the Education & Learning Category
(People's Choice 2022)**



**Validated Award Centre
Status (ASIQAL), UK**



**The Most Valuable Brand Education -
Leadership & Human Capital Management 2021,
The World Brands Foundation**



Edu-Preneur of The Year



Yayasan MSU

Yayasan MSU (YM) is a Foundation that seeks to create quality human capital and address issues on social imbalance. It relentlessly champions excellence and vigorously undertakes the promotion of culture of endowment. It provides opportunities, creates possibilities and empowers progress.

YM is committed to scholarship because intellectual curiosity promotes the discoveries that fuel innovations. Its vision on charitable causes is built strongly on the spirit of giving, compassion, understanding and tolerance for a better future. A culture of scholarship takes a nation forward and the culture of endowment ensures no one is left behind.

The drives on social responsibility are YM's core commitments. Through opportunities for academic pursuits and engagements at correcting social imbalance, YM aspires to achieve competency, excellence, economic standing, community health and welfare.

Yayasan msu | Transforming Lives Empowering Progress

 www.yayasanmsu.com.my



Scholarship & Award

- Education
- Research
- Entrepreneurship



Financial & Material Supports

- B40
- Indigenous Community
- Orphan Orphanages



Sustainability

- Environment
- Health
- Endowment



Research Initiatives

- Knowledge Transfer Programmes



Community Development

- Social Entrepreneurship



Recognition & Awards

- Arts & Culture
- Entrepreneurship

Bank Transfer

Account Name : YAYASAN MSU
Bank Name : Affin Islamic Bank Bhd
Account Number : 106640000021

Please indicate **YMSU Cares Project** at reference section of your transaction.

All contributions are tax exempted



Yayasan MSU,
Level 17, Management Tower
Management & Science University
University Drive, Off Persiaran Olahraga,
Section 13, 40100 Shah Alam
Selangor



03 5521 6868

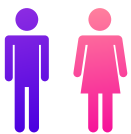
Human Resource

Staff Profiling





FULL-TIME EQUIVALENT STAFF



1,061

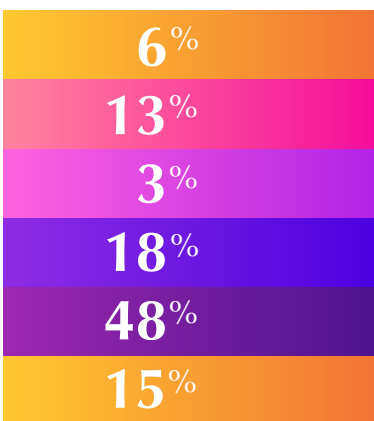
567

ACADEMIC

494

SUPPORT

ACADEMIC STAFF BY POSITION



Professor

Associate Professor

Research Fellow and Senior Research Fellow

Senior Lecturer

Lecturer

Assistant Lecturer

Adherence
and Support
to the United
Nations
Sustainable
Development
Goals (SDG)

SUSTAINABLE DEVELOPMENT GOALS



NO POVERTY



ZERO HUNGER



GOOD HEALTH AND WELL-BEING



QUALITY EDUCATION



GENDER EQUALITY



CLEAN WATER AND SANITATION



AFFORDABLE AND CLEAN ENERGY



DECENT WORK AND ECONOMIC GROWTH



INDUSTRY, INNOVATION AND INFRASTRUCTURE



REDUCED INEQUALITY



SUSTAINABLE CITIES AND COMMUNITIES



RESPONSIBLE CONSUMPTION AND PRODUCTION



CLIMATE ACTION



LIFE BELOW WATER



LIFE ON LAND



PEACE, JUSTICE AND STRONG INSTITUTIONS



PARTNERSHIP FOR THE GOALS



End poverty in all its forms everywhere.

The Management and Science University and Yayasan MSU launched the MSU Cares Fund to aid the urban poor community during the Movement Control Order 3.0 in June 2021. The aid consists of distribution of necessities and cash to the community in Selangor as well as the indigenous community in Pulau Ketam. The shared purpose of 2G Culture (Giving and Grateful) is aimed to cultivate MSU-rians’ unique set of values through kindness and compassion to become active members in the community.

Poverty must be eradicated in all its forms, according to the objectives of SDG 1. The goal of no poverty is to indicate shared prosperity, a standard quality of life and the benefits of social security that should be made accessible for everyone. MSU Cares delivers their efforts in addressing SDG 1 – no poverty by taking part in various community works involving fundraising activities, engaging with orphanages, and distributing essential items and food to the underprivilege. Students and staffs from various faculties and departments actively seek for collaboration with the non-governmental organizations (NGOs) to strengthen the partnership engagement in achieving the objectives set to address the community needs to reduce poverty.





End hunger, achieve food security and improved nutrition and promote sustainable agriculture.

MSU-rians work together to leave no one behind to ensure a hunger-free community. We turn kindness into a charity work to create changes by helping others in the local community. The HopeBox is the initiative carried out to ensure basic food necessities are received fairly by the community of urban poor regardless of their background to put an end to social exclusion through donation. In line with the objectives of SDG 2 – zero hunger, we believe that adequate food supply should be accessible to everyone. Volunteering activity provides small changes that goes both ways -it delivers vital help to those in need and benefits the volunteer to enhance their interpersonal skills and opportunity to connect with the community which can be a great learning experience. The students of MSU actively seek for the involvement in community services as part of their learning experience for various objectives that are beneficial in terms of their academic and interpersonal development.

A mong the projects initiated by the students are Food Aid Basket, Barakah Sahur and Project Bubur Lambuk to empower the aspect of community engagement in achieving the goals of zero hunger.





Ensure healthy lives and promote well-being for all at all ages.

Health is a fundamental human right. The goal of SDG – 3 is to ensure healthy lives and promote wellbeing for all at all ages. MSU sets the initiatives through continuous efforts undertaken to promote holistic wellbeing in the aspects of physical and mental wellbeing. Dance2Donate Zumba inspires MSU-rians to keep fit and the opportunity to give back to society. The importance of self-awareness is emphasized in promoting good health and wellbeing through initiatives to advocate individuals’ wellbeing such as Nicotine Awareness and Prevention and Mental Health Awareness Campaign are crucial to foster help seeking behavior in the aspects of recognition and the prevention concerning various physical and mental health issues. The significance of good health and wellbeing is demonstrated during the pandemic period through various efforts: (i) Mask on Us campaign is the initiative taken to promote mask-wearing through community engagement project and (ii) PaCE or Partnership for Covid Elimination is a collaborative effort taken to increase the coverage on COVID-19 vaccination to help in flattening the covid curve during the pandemic.





Ensure inclusive and equitable quality education and promote lifelong learning opportunities for all.

SDG 4 is the education goal that aims to provide equal to ensure inclusiveness and equitable quality education. Individuals with disabilities are among those who are at risks of being left behind in education. Quality education promotes the lifelong opportunities of inclusivity for students with disabilities. In line with SDG 4 – quality education to promote inclusive education for all, MSU has the responsibilities for the provision of inclusiveness for students with disabilities to have equal opportunities to achieve their goals. The needs of students with disabilities are accommodated by providing the best facilities to optimize their learning experience. Students, regardless of their background are provided with equal opportunities for their self-development. Sharul Ikmal Bin Mohd Sukkeri, the recipient of Gold Medal Award in conjunction with MSU 27th Convocation ceremony is an inspiring story to reflect on how quality education has the power to transform lives.





Achieve gender equality and empower all women and girls.

SDG 5 is aimed to achieve gender quality and empower all women and girls. The awareness on gender equality is fostered by exchanging information, providing basic knowledge about sensitivity and societal issues concerning women. The main themes of gender equality addressed by MSU are (i) women in leadership, (ii) equal opportunity for women in the organization, (ii) ending violence against women, and (iii) awareness on period poverty and menstrual hygiene. The Women in Science initiative promotes the role models of STEM (Science, Technology, Engineering and Mathematics) that we have in MSU to proves the achievement of women in high level corporate leadership. We believe the leadership position among women holds the power to inspire the students in MSU to achieve their goals. Women empowerment is greatly promoted among MSU-rians. For instance, the domestic violence issue is addressed through fundraising campaign that has indirectly benefitted the stakeholder to provide aid to women experiencing domestic violence.

WAO
WOMEN'S AID ORGANISATION
PERTUBUHAN PERTOLONGAN NIKMAT

**"GIVING IS NOT JUST ABOUT MAKING A DONATION
IT IS ABOUT MAKING A DIFFERENCE"**

Domestic Violence

STOP
Violence
Prevention

RM500 - help provide one tuition session for a child survivor of domestic violence

Help provide 3 meals for 1 family (single mother and newborn 2 children)

Help provide into a tote bag of body text 3 month Back to Work Programme, upskilling and training survivors to re-enter the workforce

RM500 - help provide 1 day of social work and case management

RM 250 - helps provide 3 sessions of immediate crisis counselling for mother and children

RM1000 - help provide fund our Women & Children's Programmes

msu **msu**
management & science university **SPH**

**MSU School of Pharmacy
AWARENESS TALK**

Anja Juliah Abu Bakar
Founder and Social Impact Director
Athena Holdings Sdn Bhd (www.athenaempowers.com)

WOMEN EMPOWERMENT
Menstrual Hygiene: Are you in charge of your own health?

Date: Thursday, 2 July, 2020
Time: 10am-11am
Platform: Zoom
GEMS provided

3 GOOD HEALTH AND WELL-BEING

SUSTAINABLE DEVELOPMENT GOALS



Ensure availability and sustainable management of water and sanitation for all.

SDG 6 – clean water and sanitation aims to provide access to clean water and sanitation. The sources of clean water should be accessible for consumption. In conjunction with the goal of SDG 6, the ProTech Club by MSU students organized Drinking Water Awareness Campaign as part of the advocacy campaign to promote the importance of drinking water for overall health



msu
management & science university





DRINKING WATER AWARENESS CAMPAIGN

Let's spread the awareness together by posting on your Instagram Story.



Post an Instagram story of yourself drinking a water with the phrase **'DRINK EIGHT, FEEL GREAT'**







15th August 2021 (Sunday)



11.00 p.m. (15th August 2021)



Community Service (Wellness)





NAEREEN
011-12043360



SYAIDI
014-2277864

REGISTER NOW



Drink Eight, Feel Great!



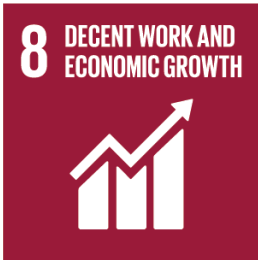




Ensure access to affordable, reliable, sustainable and modern energy for all.

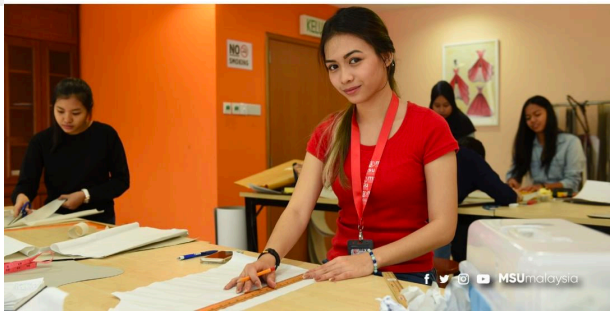
The objective of SDG – 7 aims to ensure access for affordable, reliable, sustainable, and modern energy for all. Gold prize medal has been awarded to the Management and Science University for social innovation received from the Research Innovation Commercialization and Entrepreneurship Showcase (RICES). MSU mySolar Project is initiated by the Faculty of Information Sciences and Engineering (FISE) comprises a series of projects dedicated to resolving the energy-related needs of rural and indigenous communities across Malaysia through small-scale renewable solutions that improve lives





Promote sustained, inclusive and sustainable economic growth, full and productive employment and decent work for all.

The Continuing & Extended Education Center (CEdEC) was established to promote a lifelong education which offers programs that best suit to those in need to flexibility of overall teaching and learning experiences. It can exclusively design the scheduling for professional adults in the working world or self-managed professions. We also provide short courses such as Baju Kurung Making Short Course and APEL which depending on the study needed. During the pandemic, in order to support the job-seeker, we managed to conduct MSU Virtual Career Fair in 2021 which make it easier to all job-seekers across Malaysia to drop their resume and applied for the most suitable job for them.





Promote sustained, inclusive and sustainable economic growth, full and productive employment and decent work for all.

MSU iReX 2021 is an idea regeneration expo which has become the most awaiting expo for MSU students. This expo is fully organised by Faculty of Information Sciences and Engineering (FISE) the expo is open to anyone to grab the opportunities for re-generate and recreate the old & traditional thinking into a new, creative and innovative products. Every year, the students involve for IReX will be more than 100 participation across MSU.





Reduce inequality within and among countries.

At Management and Science University (MSU), realizing the rights of persons with disabilities has been an investment into an inclusive better future; with facilities designed to maintain or increase the functional capabilities of students with a disability, and improve their campus as well as learning experiences.

Every disability presents the world with the potential for transformation or innovation. Look around you and notice how often a ramp is absent or how narrow a sidewalk can be. Add a tree root to the sidewalk and the problem exacerbates for the person in a wheelchair. Siti Nur Syahfikah Mohamad Syahrin suggests how we can all effect change: The next time you meet a differently abled person, discover what he or she knows that you don't and use it to make the all-important difference





Make cities and human settlements inclusive, safe, resilient and sustainable.

THE School of Hospitality and Creative Arts (SHCA) of Management and Science University (MSU) is well-known for its programmes to develop students’ creativity and critical thinking skills. Read more on Royal Klang Town Heritage Walk.



Make cities and human settlements inclusive, safe, resilient and sustainable.

Faculty of Health and Life Sciences MSU, has been working on the e-waste program aiming to create awareness among the students and staff, and also aiming to turn the campus into a green campus in the aspect of recycling all the reusable items. Such program had drew number of interest from students and staff in MSU.





Take urgent action to combat climate change and its impacts.

Climate change poses an evident threat to our entire civilization. In the absence of rapid action, the consequences are already evident and will become catastrophic over time. Through education, creativity, and a commitment to our climate duties, we can bring about the necessary environmental protection improvements. Management and Science University (MSU) has always been at the forefront of SDG efforts. Climate change has been a priority at MSU for the past five years. As part of the climate action project, MSU cooperated with a number of institutions, including the Majlis Bandar Shah Alam (MBSA) and the Free Tree Society, Malaysia.

During our exploration, We have learned that 80 to 90 percent of the world’s carbon emissions are produced by buildings, making them the greatest opportunity for preventing climate change through carbon reduction. As long-term owners of buildings, universities have a special obligation to combat climate change through sustainable operation. Management and Science University (MSU) receives a Diamond-2 certification from SEDA Malaysia’s Sustainable Energy Low Carbon Building Assessment. (<https://bit.ly/3D97GII>)

Not only that, MSU has been focusing on environmental sustainability as a result of our collaboration with Free Tree Society, Malaysia. We make efforts to preserve the greenery of nature. We have also collaborated with a number of non-governmental organisations that devote a great deal of time, money and effort to the preservation of the environment, particularly forests. This is necessary for our efforts to have the greatest possible impact. In addition, we have been directly involved in tree replanting initiatives and have ensured that the forest ecosystem in East and West Malaysia can be preserved.





Conserve and sustainably use the oceans, seas and marine resources for sustainable development.

Healthy oceans and seas are essential to our existence. They cover 70 percent of our planet and we rely on them for food, energy and water. Yet, we have managed to do tremendous damage to these precious resources. We must protect them by eliminating pollution and overfishing and immediately start to responsibly manage and protect all marine life around the world. MSU takes a great responsibility in developing a sustainable future for everyone. We are devoted in empowering MSU community with the awareness, knowledge, skills, and opportunities to comprehend and implement all the SDG 14.

For the 5th year, the university recently revisited its MyCoral series on the fifth edition of the coral propagation programme in the Malaysian state of Terengganu. Beneath the waves, MSU is helping conservation strategies by deploying and maintaining coral propagators in its effort to raise world coral population this side of the globe and support United Nations Sustainable Development Goals (UNSDG). MSUrians are playing up their holistic skills for the environmental cause, creating eco-awareness and raising eco-friendliness in community engagement and environmental sustainability activities. (<https://bit.ly/3FnqF54>)

To safeguard our sea turtles, numerous conservation initiatives and policies have been implemented, but we understand that more needs to be done. In order to further boost the local conservation efforts, we have joined forces with the local conservatory. We are determined to address this problem starting with Terengganu. Our ultimate goal is to restore the glory days when turtles would lay their eggs on Malaysian coasts every other day. (<https://bit.ly/3gK2Udf>).





Protect, restore and promote sustainable use of terrestrial ecosystems, sustainably manage forests, combat desertification, and halt and reverse land degradation and halt biodiversity loss.

A thriving geological and biological ecosystem is the foundation of life on this planet. We are all a part of the planet's ecology, which has been severely damaged by deforestation, habitat loss, and land degradation. Preserving biodiversity and promoting the sustainable use of our ecosystems are not agendas. It is critical to our survival. Environmental sustainability is an important agenda in developing community and country. Supporting the United Nations Sustainable Development Goals (UNSDGs), Management and Science University (MSU) recently kicked off its MSU Sg Damansara National River Trail Project and mangrove conservation project with cleaning of the riverbank behind the University's campus grounds in Shah Alam Section 13 and planting 300 mangrove trees in Terengganu.

The MoU signed last August with Malaysia's Ministry of Environment and Water (KASA) Department of Irrigation and Drainage (JPS) includes research, development, and innovation, as well as a focus on hydrology and water resources, management of rivers and their corridors, consultation and advice, skills and training, and production as well as publication of high-impact journals. The pilot project involving environmental appreciation and sustainable development along the Sungai Damansara fulfils Goal 15 of the UN Sustainable Development Goals for Life on Land. Phase 1 of the MSU Sg Damansara National River Trail Project consists of fifteen ongoing initiatives that are prepared to contribute to the national goal of 10,000km of river pathways. Walkways, jogging trails, and recreational areas serving community and entrepreneurship opportunities are set to be built on a 4km span between the MSU Campus and the MSU Medical Centre (MSUMC). (<https://bit.ly/3T5QsSR>)

Conservation and restoration of mangroves have various benefits for tackling climate change. Mangrove soil is a very efficient carbon sink capable of sequestering large quantities of carbon. Mangroves support a diversity of species, giving food and habitat for our seafood supply. They provide a thriving ecosystem between land and sea, acting as a natural barrier against coastal erosion. Their decline rate is three to five times faster than that of the world's forests, which has major ecological and socioeconomic consequences. MSU together with Mangrove conservations have planted hundreds of mangrove propagules. To ensured that the forest and water ecosystem in East and West Malaysia can be preserved. (<https://bit.ly/3DNbpgX>)



Promote peaceful and inclusive societies for sustainable development, provide access to justice for all and build effective, accountable and inclusive institutions at all levels.

In a democratic society, compassion and a strong moral compass are crucial. Thus, we must ensure that we have strong institutions, global justice standards, and a worldwide commitment to peace. MSU has always been committed in providing a peace, justice and strong institution.

Professor Dato' Wira Dr. Mohd Shukri Ab. Yajid is a prominent figure in Malaysian higher education. He established Management & Science University, Malaysia's premier private institutions of higher education. MSU's successes and accomplishments are a result of his passion for quality education and commitment to actively engage the corporate, academic, and community sectors. His knowledge and views on education development and policy issues are frequently sought after. He has been appointed by the Malaysian government to various education committees, which is a testimony of his passion and commitment to the development of Malaysia's education standards locally and internationally. These committees include being the Advisor for Malaysian Higher Education (MOHE), the National Implementation Task Force (NITF), National Higher Education Funds' board, and the Human Resources Cluster Working Group (CWG), all of which were constituted by the Prime Minister's office. He is also serving as the board of director for Tokyo, Japan's Alliance for Business Education & Scholarship of Tomorrow (ABEST 21).

Over and above that, as a university, we believe in students' rights and responsibilities. We have established various student unions to represent the student community to the management and society. The main student union is known as the Student Representative Council (SRC). Essentially, it is a group of students working cooperatively to make specific events feasible but as the time went on, student representative council has become the face of MSU student community. They are medium of communication between the management and the students. They are also the ambassadors of cooperation and leadership among the students. SRC is comprised of students from all levels of education in MSU. SRC is elected by the students for the students.



Strengthen the means of implementation and revitalize the Global Partnership for Sustainable Development.

SDG 17 advocates for global sustainability partnerships. The goal emphasizes global macroeconomic stability and the need to mobilize international and domestic resources for developing countries. It highlights the necessity of trade for developing countries and equitable trade laws. SDG 17 promotes access to science, technology, and innovation, especially internet-based Information and Communication Technology. Management and Science University Collaborated with various government officials during the pandemic to protect and uphold the lives and economies, health-risk of the community.

The appointment of MSUMC as a National COVID-19 Vaccination Centre by the Ministry of Health Malaysia is a continuation of Management and Science University's (MSU) former responsibility for administering COVID-19 tests (<https://bit.ly/3NqCb1A>). Drive-Through COVID-19 Testing by MSUMC, performed through MSU's Research and Diagnostic Lab (DXL), helped lower infection risks among the Malaysian population at the onset of the pandemic. The National COVID-19 Immunization Program (NIP) consists of three phases, and MSUMC is one of 500 public vaccination facilities (Pusat Pemberian Vaksin) in Malaysia. During Phase one, MSU provided covid vaccination to Frontliners and Seniors. In addition, every day for six weeks starting September 20, about 2,500 16- to 17-year-old students in the Petaling Perdana and Petaling Utama districts receive Pfizer's Comirnaty vaccinations at the MSU Chancellor Hall Vaccination Centre (PPV). (<https://bit.ly/3NjmMA4> & <https://bit.ly/3SKveK1>)

Additionally, through the M-Protect Project, MSU donated 1,800 PPE to several government hospitals. The School of Hospitality and Creative Arts and the International Medical School developed the M-ProteC Project as a community service initiative. In response to the COVID-19 pandemic, university staff and students collaborated to design personal protective equipment (PPE) for medical frontline workers. Safety and care were stressed from the earliest stages of designing, cutting, assembling, and packaging to assure the quality of the PPEs. The prepared PPEs were handed to the hospitals on a staggered basis, to the satisfaction of all. (<https://bit.ly/3TSx7pk>)